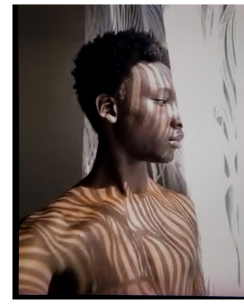


TOM FORD  
EYEWEAR

TAMSIR THIAM



RED

NEW YORK - EST. 2007

RED Model Management, 450 West 31st Street 9th Floor New York, NY 10001.

212-785-1999 | [www.rednyc.com](http://www.rednyc.com)

Height: 6'1.5" Suit: 36 Waist: 27" Inseam: 32" Shoes: 10.5 US Hair: Black  
Eyes: Brown